

## Using Classroom Exchange under OS X

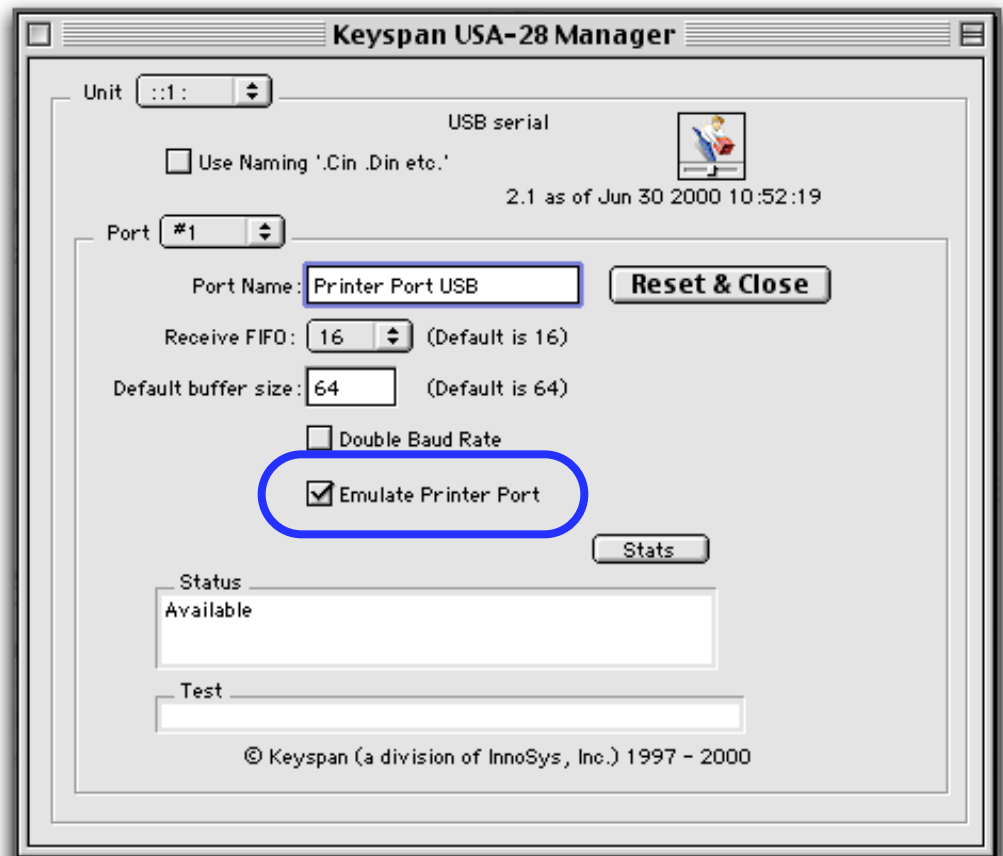
There seems to be interest in being able to move newton works files to and from the eMate under OS X. I have successfully been able to do this. This explanation is only about using Classroom Exchange with a USB Serial adapter. I do not have an ethernet card to use apple talk. I will explain what I had to do to get the program to work.

First, the working set up I have I have only installed the Keyspan USA-28 (USB to Serial) adapter drivers for classic (<http://www.keyspan.com/downloads/mac/>). Note that I only have the older adapter. The one most people are likely to have is the USA-28X. The main difference is that the newer one can use more devices (read the FAQ at Keyspan's site <http://tinylink.com/?4YfAitpwik> ). Also note that the drivers are different for these adapters, but I assume that they work the same for this explanation.

Once your drivers are installed for the keyspan adapter, you should install the Classroom Exchange program (<http://www.unna.org/view.php?/apple/software/>).

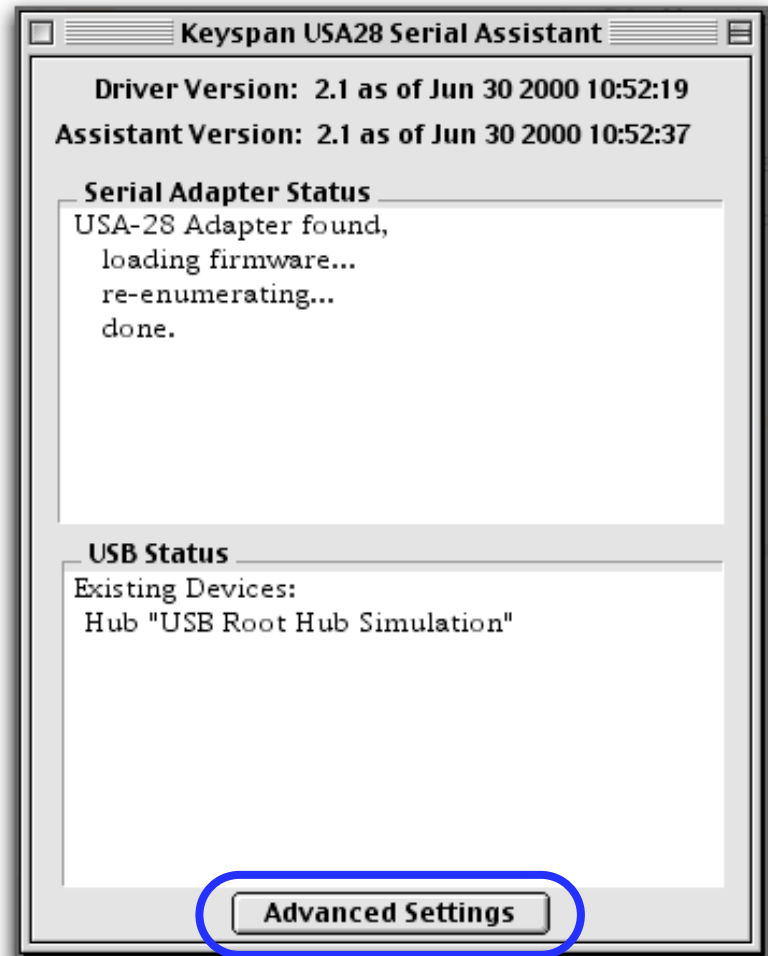
This is where it will get tricky. In order for you to use the classroom exchange program you will need to set your serial adapter to "Emulate Printer Port". You may notice that there is no way to do this from the Keyspan control panel under classic. You will have to trick your system into letting you set this. Under the "System Folder" you should see an entry called "Keyspan USA28 Manager" or "Keyspan USA28X Manager" depending on which adapter you are using. Double clicking on this will open the manager. This is the same thing that will open if you were able to click on the Advanced

### Keyspan Manager



## Keyspan Control panel

Settings button from “Keyspan USA28/ X Assistant” from the control panel. Be sure that you have your device plugged in before opening the Manager. Once the Manager is open check the “Emulate Printer Port” box, Then close the window. You will get a note that says you have to disconnect the device and plug it back in before changes will take effect. Do this.



Next you will need to launch the Classroom exchange program. While you have the Classroom Exchange program active, under the “Edit” menu, go to preferences. You should see, under “Listen for Connections on” both ports for your adapter. Check these and click save. Note that if you have fol-

lowed the above steps and you do not see your adapter listed, make sure you have the adapter plugged in before opening the Classroom Exchange Preferences.

Next you will have to start the Classroom exchange server and connect your eMate. From your emate, start the the “Classroom dock”. Select the serial connection and connect. If it does not connect stop and start the classroom exchange server and try and connect again. Put in the name of the folder you want to have the documents added into (this is assumed that you had a classroom of students and this was as way to tell their documents apart but you could use this for different projects you are working on) and press the return key on the keyboard or the X box on the slip. You will then be asked if you wish to “Get work from server” or “Copy work to server”.

I hope this helps you with getting your work to and from your newton :)

